

DATA SHEET



Three Phase Induction Motor - Squirrel Cage

Customer :								
Product line	: W22 NEMA Premium Efficiency Three-Phase	Product code :	11716182					
		Catalog # :	04018ET3E324TCF2-W22					
Frame	: 324TC	Locked rotor time	: 36s (cold) 20s (hot)					
Output	: 40 HP (30 kW)	Temperature rise	: 80 K					
Poles	: 4	Duty cycle	: Cont.(S1)					
Frequency	: 60 Hz	Ambient temperature	: -20°C to +40°C					
Rated voltage	: 230/460 V	Altitude	: 1000 m.a.s.l.					
Rated current	: 94.2/47.1 A	Protection degree	: IP55					
L. R. Amperes	: 574/287 A	Cooling method	: IC411 - TEFC					
LRC	: 6.1x(Code G)	Mounting	: F-2					
No load current	: 34.6/17.3 A	Rotation ¹	: Both (CW and CCW)					
Rated speed	: 1775 rpm	Noise level ²	: 66.0 dB(A)					
Slip	: 1.39 %	Starting method	: Direct On Line					
Rated torque	: 118 ft.lb	Approx. weight ³	: 563 lb					
Locked rotor torque	: 229 %							
Breakdown torque	: 240 %							
Insulation class	: F							
Service factor	: 1.25							
Moment of inertia (J)	: 9.16 sq.ft.lb							
Design	: B							
Output	25% 50% 75% 100%	Foundation loads						
Efficiency (%)	0.000 93.6 92.9 94.1 93.1 94.1 93.0 0.000 92.4 91.7 93.0 92.6 93.2 93.1 0.000 93.6 93.6 93.0 93.0 92.4 92.4 93.0 93.0 93.0 93.0	Max. traction	: 980 lb					
Power Factor	0.00 0.00 0.72 0.68 0.80 0.78 0.85 0.84 0.00 0.64 0.62 0.75 0.73 0.82 0.80 0.77 0.77 0.84 0.84 0.86 0.86 0.72 0.80 0.85	Max. compression	: 1543 lb					
Losses at normative operating points (speed;torque), in percentage of rated output power								
Losses (%)	P1 (0,9;1,0)	6.2	7.5	7.3	7.4	8.2	8.2	7.5
	P2 (0,5;1,0)	5.4	6.5	6.3	6.4	7.1	7.1	6.5
	P3 (0,25;1,0)	4.9	5.9	5.7	5.8	6.5	6.5	5.9
	P4 (0,9;0,5)	2.8	3.4	3.2	3.3	3.7	3.7	3.4
	P5 (0,5;0,5)	2.0	2.4	2.4	2.4	2.7	2.7	2.4
	P6 (0,5;0,25)	1.3	1.5	1.5	1.5	1.6	1.6	1.5
	P7 (0,25;0,25)	0.9	1.1	1.0	1.1	1.2	1.2	1.1
Bearing type	:	<u>Drive end</u> 6312 C3	<u>Non drive end</u> 6212 C3					
Sealing	:	V'Ring	V'Ring					
Lubrication interval	:	20000 h	20000 h					
Lubricant amount	:	21 g	13 g					
Lubricant type	:	Mobil Polyrex EM						
Rev.	Changes Summary		Performed	Checked	Date			
Performed by								
Checked by				Page	Revision			
Date	25/02/2025			1 / 2				

DATA SHEET

Three Phase Induction Motor - Squirrel Cage



Customer : _____

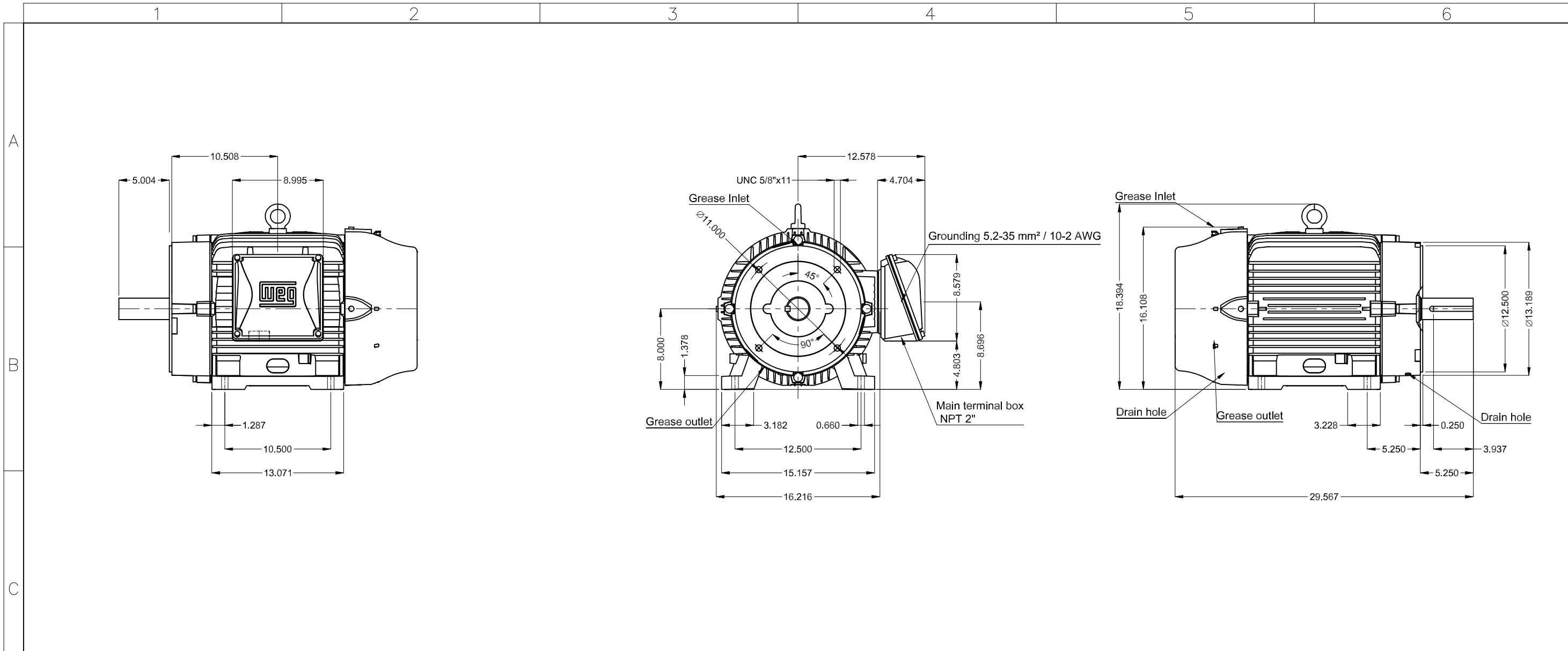
Notes

This revision replaces and cancel the previous one, which must be eliminated.

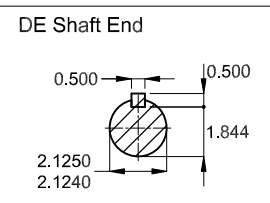
- (1) Looking the motor from the shaft end.
- (2) Measured at 1m and with tolerance of +3dB(A).
- (3) Approximate weight subject to changes after manufacturing process.
- (4) At 100% of full load.

These are average values based on tests with sinusoidal power supply, subject to the tolerances stipulated in NEMA MG-1.

Rev.	Changes Summary	Performed	Checked	Date
Performed by				
Checked by			Page	Revision
Date	25/02/2025		2 / 2	



Color RAL 5009
 Painting plan 203A
 Mounting B34L(E)



40 HP 04 Poles 60 Hz						A		
Scale 1 : 10								
				HYBRISUSER	00			
ECM	LOC	SUMMARY OF MODIFICATIONS		EXECUTED	CHECKED	RELEASED	DATE	VER
EXECUTED	HYBRISUSER	THREE PH. MOTOR W22 NEMA PREM. EFF.						
CHECKED		FRAME 324TC IP55 TEFC						
RELEASED								
REL. DATE								
				PREVIEW				
				WDD	00			
				SHEET	1 / 1			